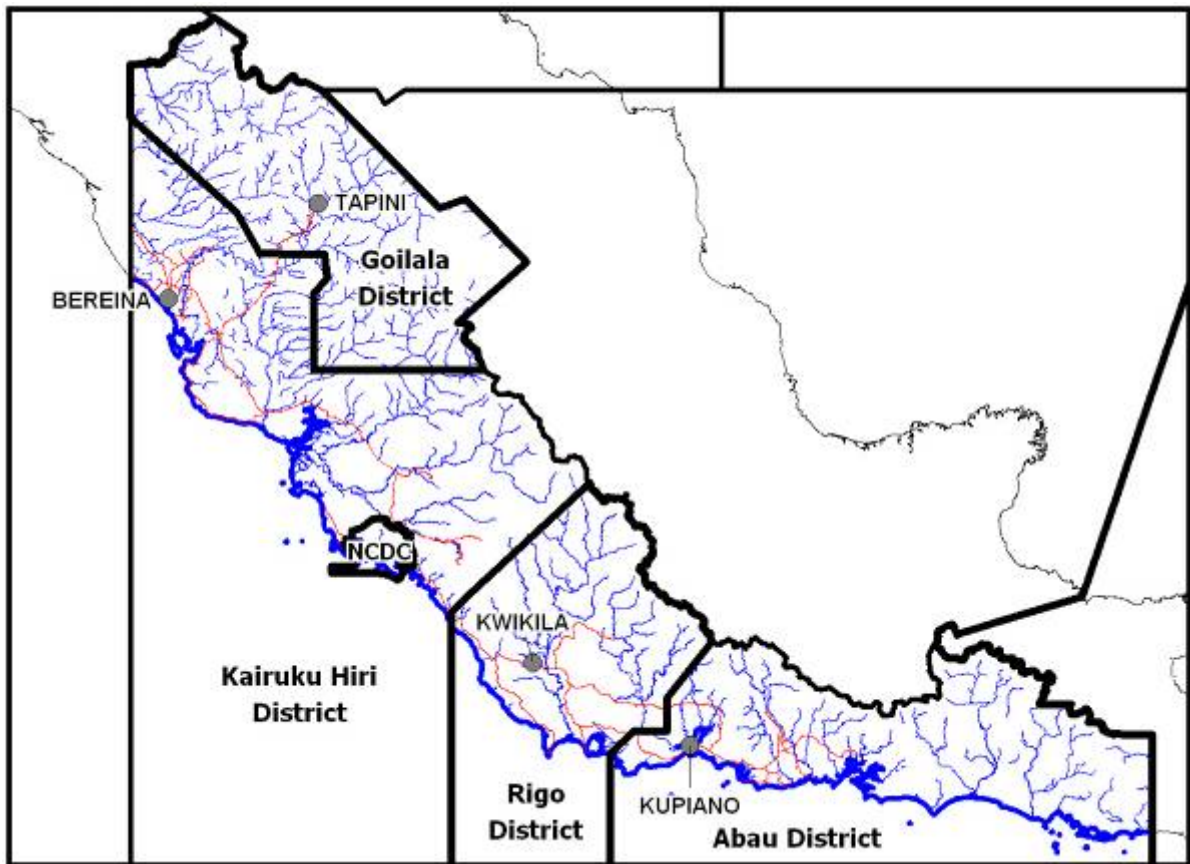


Central Province



Central Province

General Information

Administration

Provincial headquarters: Port Moresby
Number of districts: 4 - Abau, Goilala, Kairuku-Hiri, Rigo
Number of LLGs: 13
Number of wards: 205

Population

		Male (%)	Female (%)
Total	183983	52.2	47.8
< 15 years	77376	53.0	47.0
15-64 years	100896	51.5	48.5
> 65 years	5711	52.2	47.8
Citizen households	29742		

Area and population density

Area (km ²)	29998
Occupied area (km ²)	6890
Population per km ²	6.1
Population per km ² of occupied area	26.7

Average annual population growth rate (1980-2000): 2.3

About Central

Central Province occupies the southern side of the Owen Stanley Ranges and the area of coast from Bereina in the north to Gaire Village in the south.

The provincial member is Mr. Alphonse Moroi, of the Rural Development Party. This is his second term.

People living near Bereina can earn a high income from the sale of food and betel nut, while those in reasonable proximity to Port Moresby can earn moderate incomes selling food and other goods at markets. People in the more remote areas of Goilala and Abau have low potential environments and earn low incomes. Many people commute to earn non-agricultural wage incomes in and around Port Moresby.

A road runs along the length of the province, and areas around Port Moresby are also well served by roads. Another road leads up to the Sogeri Plateau and the start of the Kokoda Track. However, Goilala district and the east of Abau district have very few roads.

Electoral statistics

Eligible voters (2000 Census)	94491
Number of votes cast (2002)	94576
2002 Electoral Roll	191496
Number of votes cast (2007)	99827
2007 Electoral Roll	151932

Education

Type and number of schools

Elementary	375
Community	77
Primary	129
Provincial high	6
Secondary	5
Vocational	3

Universal basic education indicators (%)

Net admission rate	32.7%
Gross enrolment rate	77.8%
Net enrolment rate	58.3%

Literacy rate (%)

Total	Male	Female
72.1	75.4	68.6

Health

Number and population per facility

Health centres	29	6344
Aid posts	76	2421

Number and population per officer

Medical officers	0	n/a
Nursing officers	48	3833

Mortality rates (per 1000)

Under 5 mortality rate	62
Infant mortality rate (under 1 year)	47
Child mortality rate (1-4 years of age)	15

Life expectancy (years)

Total	Male	Female
56.4	56.2	56.7

Economic Activity

Top agricultural activities of citizen households

	% engaged	%* engaged for cash
Food crops	75.3	13.7
Betel nut	57.0	27.6
Coconut	53.0	10.0
Fishing	36.3	9.5
Livestock	34.7	7.7

*of total citizen households

Infrastructure

Electricity customers	3182
Percent of population within 5km of a national road	63.0

Abau District

General Information

Administration

District headquarters: Abau
Number of LLGs: 3 - Amazon Bay Rural, Aroma Rural, Cloudy Bay Rural
Number of wards: 40

Population

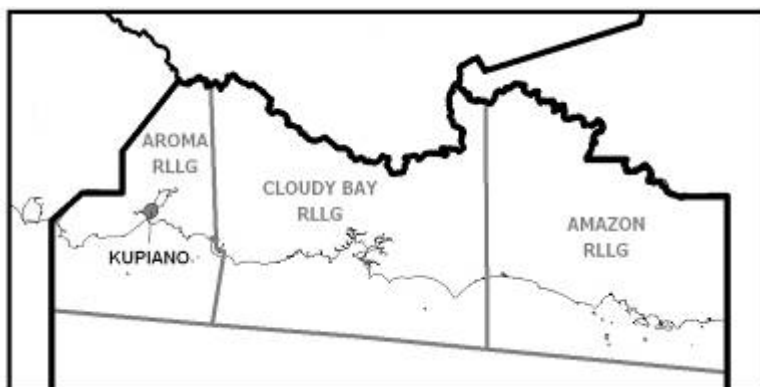
		Male (%)	Female (%)
Total	38378	51.6	48.4
< 15 years	16165	52.6	47.4
15-64 years	20795	50.7	49.3
> 65 years	1418	53.7	46.3
Citizen households	5923		

Area and population density

Area (km ²)	7124
Occupied area (km ²)	1201
Population per km ²	5.4
Population per km ² of occupied area	32.0

Electoral statistics

Eligible voters (2000 Census)	19613
Number of votes cast (2002)	21035
Number of votes cast (2007)	22365



About Abau

Abau district is located in the south east of Central Province. The district covers the coastal areas west of Milne Bay and the mountains and valleys of the Owen Stanley Ranges.

The district member is Sir Puka Temu of the National Alliance Party. He is the current Deputy Prime Minister. He won this seat in 2002, however, the election was subsequently annulled. He then faced and won a by-election in 2004.

There is potential for increased agricultural activities in the coastal plains of the district, especially north of Kupiano, and incomes are high from food sales in the Cape Rodney land settlement area. However, the population living in the coastal swamps and in isolated mountain areas earn low incomes from food, fishing, betel nut, coconut and coffee. The land in these areas has poor agricultural potential.

Education

Type and number of schools

Elementary	83
Community	15
Primary	29
Provincial high school	2
Vocational	1

Universal basic education indicators

Net admission rate	8.7%
Gross enrolment rate	71.7%
Net enrolment rate	52.8%

Literacy rate

Total	Male (%)	Female (%)
78.4	81.4	75.3

Health

Number and population per officer

Medical officers	0	n/a
Nursing officers	9	4264

Number and population per facility

Health centres	5	7676
Aid posts	22	1744

Infrastructure

Road access

An unsurfaced road leads from Kupiano to Kwikila and from there a sealed road runs to Port Moresby. There are some minor roads in the district, however, water transport is common for travel to Milne Bay and to Port Moresby.

Economic Activity

Top agricultural activities of citizen households

	% engaged	%* engaged for cash
Food crops	81.3	9.2
Coconut	75.7	16.0
Fishing	55.4	12.0
Betel nut	55.2	15.2
Livestock	30.2	4.8

*of total citizen households

Goilala District

General Information

Administration

District headquarters: Tapini
Number of LLGs: 3 - Guari Rural, Tapini Rural, Waitape Rural
Number of wards: 23

Population

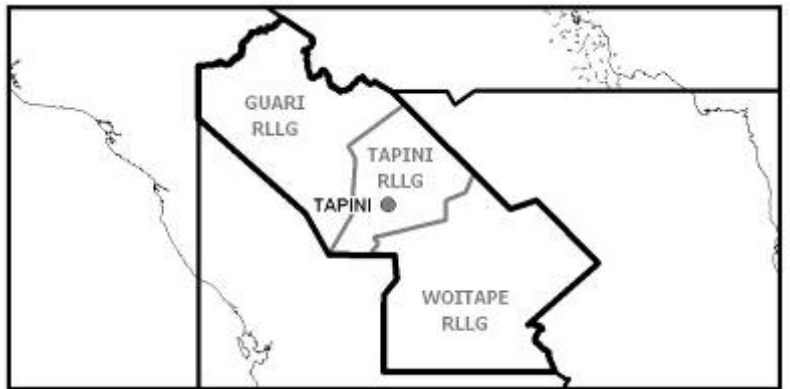
		Male (%)	Female (%)
Total	27345	51.9	48.1
< 15 years	11484	53.7	46.3
15-64 years	14980	50.1	49.9
> 65 years	881	58.3	41.7
Citizen households	5464		

Area and population density

Area (km ²)	7587
Occupied area (km ²)	1684
Population per km ²	3.6
Population per km ² of occupied area	16.2

Electoral statistics

Eligible voters (2000 Census)	14234
Number of votes cast (2002)	13287
Number of votes cast (2007)	n/a



About Goilala

Goilala District is located in the northern inland area of Central Province, bordering both Morobe and Oro Provinces, and covers the mountains and valleys of the Owen Stanley Ranges.

The district member is Mr. Mathew Poia, of the National Alliance Party. The member between 2002 and 2007 was Mr. Fabienne Savo Inne. Waitape Rural LLG, in this district, is one of only four Local-level Governments in PNG to have a female president.

Incomes are moderate and agricultural potential is high in the lower valleys where transportation to markets is available. The upper valleys have low incomes and low agricultural potential because of their steep slopes and poor weather conditions. There is a gold mining operation at Tolukuma, north of Waitape, however, it has little influence on the incomes of the rural population.

Education

Type and number of schools

Elementary	59
Community	26
Primary	8
Provincial high school	1
Vocational	0

Universal basic education indicators

Net admission rate	10.7%
Gross enrolment rate	57.4%
Net enrolment rate	42.0%

Literacy rate

Total	Male (%)	Female (%)
24.7	30.3	18.7

Health

Number and population per officer

Medical officers	0	n/a
Nursing officers	4	6836

Number and population per facility

Health centres	7	3906
Aid posts	8	3418

Infrastructure

Road access

The only road in the district is in poor condition and leads from the Hiritano Highway to Tapini. Graded tracks link to Waitape, Guari and other small towns. Parts of the district would require more than eight hours travel to Port Moresby.

Economic Activity

Top agricultural activities of citizen households

	% engaged	%* engaged for cash
Food crops	76.2	9.4
Livestock	74.6	20.2
Coffee	70.4	62.7
Betel nut	60.1	26.2
Poultry	32.7	4.1

*of total citizen households

Kairuku-Hiri District

General Information

Administration

District headquarters: Bereina/Konedobu
Number of LLGs: 4 - Hiri Rural, Kairuku Rural, Koiari Rural, Mekeo Rural
Number of wards: 75

Population

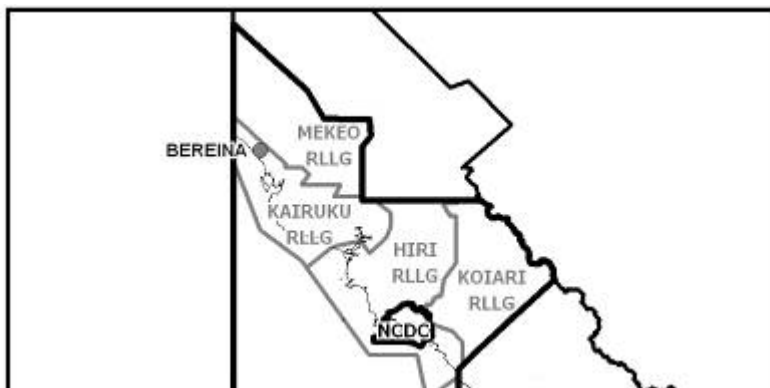
		Male (%)	Female (%)
Total	78784	52.7	47.3
< 15 years	33007	52.8	47.2
15-64 years	43668	52.7	47.3
> 65 years	2109	52.5	47.5
Citizen households	11670		

Area and population density

Area (km ²)	10215
Occupied area (km ²)	2003
Population per km ²	7.7
Population per km ² of occupied area	39.3

Electoral statistics

Eligible voters (2000 Census)	40408
Number of votes cast (2002)	38759
Number of votes cast (2007)	38964



About Kairuku-Hiri

Kairuku-Hiri district surrounds Port Moresby and stretches from Gulf Province to Gaire Village, south east of Port Moresby. The inland areas in the Owen Stanley Range include the Sogeri Plateau and the area surrounding the Kokoda Track.

The district member is Mr. Paru Aihi, a member of the PNG Party. The long-term member before 2007 was Sir Moi Avei.

Port Moresby markets offer high income-earning opportunities for the sale of food and betel nut, however there is also strong population pressure on the flood plains around Bereina and in the settlement areas north of Port Moresby, with high intensity cultivation being practised on land with a poor potential for agriculture. The most disadvantaged communities are those living along the Kokoda Track. The land surrounding these communities has poor agricultural potential and there is poor access to services.

Education

Type and number of schools

Elementary	131
Community	10
Primary	60
Provincial high school	2
Vocational	1

Universal basic education indicators

Net admission rate	19.2%
Gross enrolment rate	79.8%
Net enrolment rate	60.8%

Literacy rate

Total	Male (%)	Female (%)
81.5	83.9	78.9

Health

Number and population per officer

Medical officers	0	n/a
Nursing officers	26	3030

Number and population per facility

Health centres	12	6565
Aid posts	18	4377

Infrastructure

Road access

A sealed road runs the length of the district and up to Sogeri. Sea transport along the coast is common. The most remote people, along the Kokoda Track, can require more than one day's travel to reach Port Moresby.

Economic Activity

Top agricultural activities of citizen households

	% engaged	%* engaged for cash
Food crops	71.3	14.7
Coconut	56.2	9.2
Betel nut	52.2	34.3
Fishing	42.9	12.4
Livestock	29.7	6.6

*of total citizen households

Rigo District

General Information

Administration

District headquarters: Kwikila
Number of LLGs: 3 - Rigo Central Rural, Rigo Coastal Rural, Rigo Inland Rural
Number of wards: 67

Population

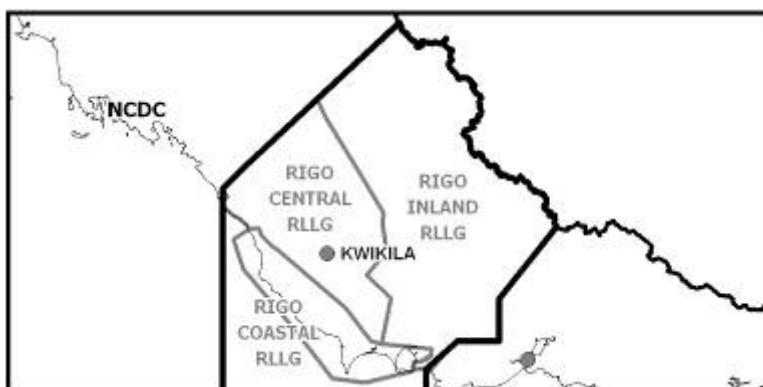
		Male (%)	Female (%)
Total	39476	51.9	48.1
< 15 years	16720	53.3	46.7
15-64 years	21453	50.8	49.2
> 65 years	1303	54.1	45.9
Citizen households	6685		

Area and population density

Area (km ²)	5072
Occupied area (km ²)	2002
Population per km ²	7.8
Population per km ² of occupied area	19.7

Electoral statistics

Eligible voters (2000 Census)	20236
Number of votes cast (2002)	21503
Number of votes cast (2007)	22975



About Rigo

Rigo District is located in the south east of Central Province, and stretches from the coast up into the Owen Stanley Ranges on the border of Oro Province.

The district member is Mr. Ano Pala, a member of the National Alliance Party and a Parliamentary Secretary for Lands and Physical Planning and Mining. The member between 2002 and 2007 was Mr. Anderson Vele.

There are low incomes available from agriculture on the coast, as a long dry season makes the coastal plains unsuitable for intensive agricultural activity. However, many people commute to Port Moresby to earn an income. The most disadvantaged people are those living in the Owen Stanley Ranges who live on land that has a low potential for cultivation and are remote from services.

Education

Type and number of schools

Elementary	102
Community	26
Primary	32
Provincial high school	1
Vocational	1

Universal basic education indicators

Net admission rate	16.2%
Gross enrolment rate	83.5%
Net enrolment rate	62.6%

Literacy rate

Total	Male (%)	Female (%)
80.4	83.6	76.9

Health

Number and population per officer

Medical officers	0	n/a
Nursing officers	9	4386

Number and population per facility

Health centres	5	7895
Aid posts	28	1410

Infrastructure

Road access

A sealed road runs through Rigo from Kwikila to Port Moresby. Some villages in the Owen Stanley Ranges are very remote, requiring more than one day's travel to reach Port Moresby.

Economic Activity

Top agricultural activities of citizen households

	% engaged	%* engaged for cash
Food crops	76.0	19.5
Coconut	69.7	13.7
Betel nut	64.4	28.2
Fishing	30.9	8.8
Livestock	14.8	1.9

*of total citizen households