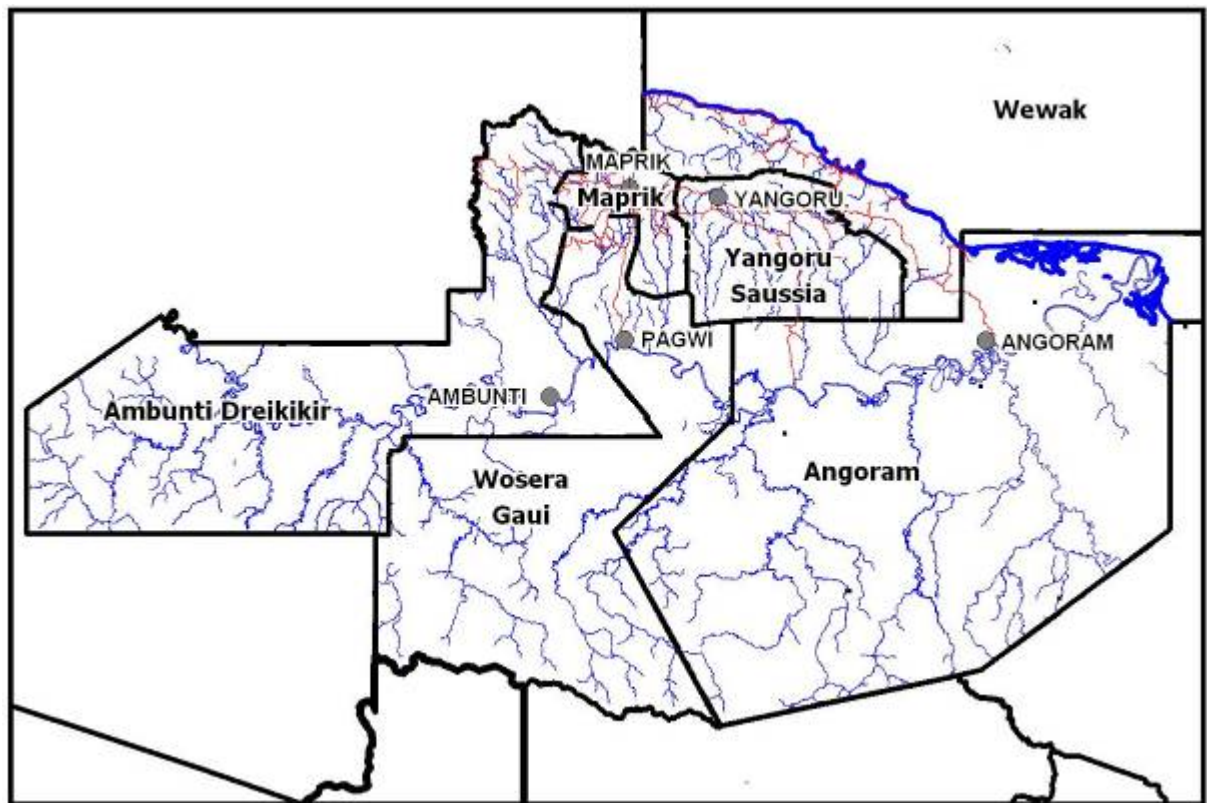


# East Sepik Province



# East Sepik Province

## General Information

### Administration

<b>Provincial headquarters:</b> Wewak
<b>Number of districts:</b> 6 - Ambunti Dreikikir, Angoram, Maprik, Wewak, Wosera Gaui, Yangoru Saussia
<b>Number of LLGs:</b> 26
<b>Number of wards:</b> 647

### Population

		Male (%)	Female (%)
Total	343181	50.1	49.9
< 15 years	149905	51.7	48.3
15-64 years	183776	48.7	51.3
> 65 years	9500	50.1	49.9
Citizen households	65231		

### Area and population density

Area (km <sup>2</sup> )	43426
Occupied area (km <sup>2</sup> )	9662
Population per km <sup>2</sup>	7.9
Population per km <sup>2</sup> of occupied area	35.5

**Average annual population growth rate (1980-2000):** 2.2

## About East Sepik

East Sepik Province covers the coastal plains, the end of the Torricelli Mountains and the Prince Alexander Mountains in the north. The Sepik River flows east to west through the province, with the Central Range and the border with Enga Province in the south.

The provincial member is the Prime Minister, Grand Chief Sir Michael Thomas Somare, of the National Alliance Party. He was Papua New Guinea's first Prime Minister and has served this electorate since 1968.

Most of the people of East Sepik Province earn relatively low incomes from food, cocoa, fish or betel nut. Some more moderate incomes can be earned around Yangoru and Dreikikir from selling rubber, cocoa and food. However poor roads are a major limitation. There are also no major industries in the province.

The Sepik Highway and other minor roads provide good coverage of the more populated areas in the north of the province. Water transport is most significant along the Sepik and other rivers. People in the south of the province, towards the border with Enga Province are the most remote, requiring more than a day's travel to reach a service centre.

### Electoral statistics

Eligible voters (2000 Census)	170623
Number of votes cast (2002)	160733
2002 Electoral Roll	286716
Number of votes cast (2007)	174215
2007 Electoral Roll	240551

## Education

### Type and number of schools

Elementary	273
Community	48
Primary	197
Provincial high	11
Secondary	4
Vocational	9

### Universal basic education indicators (%)

Net admission rate	2.8%
Gross enrolment rate	73.8%
Net enrolment rate	50.5%

### Literacy rate (%)

Total	Male	Female
52.7	59.7	46.0

## Health

### Number and population per facility

Health centres	37	9275
Aid posts	87	3945

### Number and population per officer

Medical officers	17	20187
Nursing officers	176	1950

### Mortality rates (per 1000)

Under 5 mortality rate	115
Infant mortality rate (under 1 year)	79
Child mortality rate (1-4 years of age)	36

### Life expectancy (years)

Total	Male	Female
52.2	51.3	53.1

## Economic Activity

### Top agricultural activities of citizen households

	% engaged	%* engaged for cash
Coconut	79.1	10.4
Food crops	75.7	9.7
Betel nut	72.3	17.3
Cocoa	61.3	60.3
Coffee	57.4	56.2

\*of total citizen households

## Infrastructure

Electricity customers	2380
Percent of population within 5km of a national road	43.8

# Ambunti Dreikikir District

## General Information

### Administration

<b>District headquarters:</b> Ambunti
<b>Number of LLGs:</b> 4 - Ambunti Rural, Dreikikir Rural, Gawanga Rural, Tunap Hustin
<b>Number of wards:</b> 123

### Population

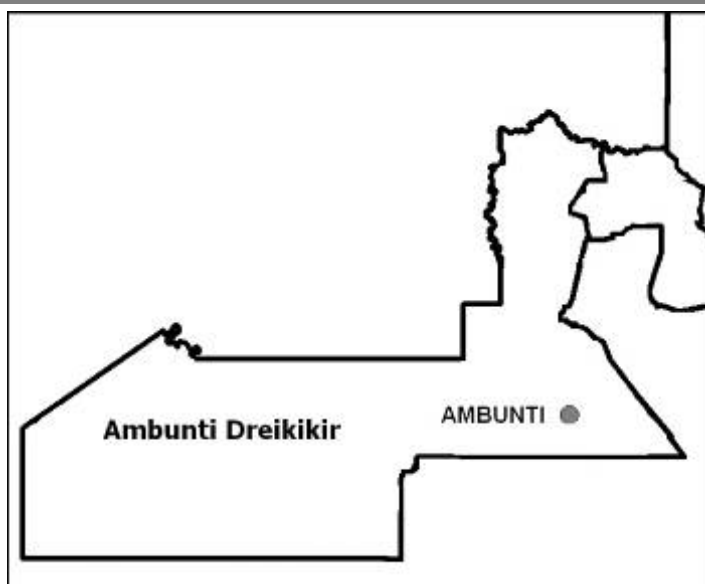
		Male (%)	Female (%)
Total	55397	50.6	49.4
< 15 years	24154	51.5	48.5
15-64 years	30028	49.7	50.3
> 65 years	1215	53.2	46.8
Citizen households	11535		

### Area and population density

Area (km <sup>2</sup> )	10784
Occupied area (km <sup>2</sup> )	2412
Population per km <sup>2</sup>	5.1
Population per km <sup>2</sup> of occupied area	23.0

### Electoral statistics

Eligible voters (2000 Census)	27717
Number of votes cast (2002)	26800
Number of votes cast (2007)	27408



## About Ambunti Dreikikir

Ambunti-Dreikikir District occupies the western border of the district. The Torricelli Mountains rise in the north while the Sepik River flows through Ambunti.

The district member is Mr. Tony Aimos, of the People's Action Party. This is his second term in parliament.

Moderate incomes from the sale of food and coffee can be earned around Dreikikir. However for the rest of the district there are very few income-earning opportunities.

## Education

### Type and number of schools

Elementary	82
Community	7
Primary	39
Provincial high school	2
Vocational	2

### Universal basic education indicators

Net admission rate	2.8%
Gross enrolment rate	65.5%
Net enrolment rate	43.2%

### Literacy rate

Total	Male (%)	Female (%)
40.3	48.6	31.9

## Health

### Number and population per officer

Medical officers	0	n/a
Nursing officers	12	4616

### Number and population per facility

Health centres	8	6925
Aid posts	12	4616

## Infrastructure

### Road access

A road runs from Wewak through Dreikikir and on to Lumi in Sandaun Province. Ambunti is not linked by road. People instead travel along the Sepik River to Pagwi, and then by road to Wewak. Those in the southern Sepik tributaries are very remote.

## Economic Activity

### Top agricultural activities of citizen households

	% engaged	%* engaged for cash
Coconut	79.4	1.1
Food crops	78.7	4.9
Coffee	69.3	68.3
Betel nut	67.1	3.5
Cocoa	51.0	50.4

\*of total citizen households

# Angoram District

## General Information

### Administration

**District headquarters:** Angoram  
**Number of LLGs:** 5 – Angoram Middle Sepik Rural, Karawari Rural, Keram Rural, Marienberg Lower Sepik Rural, Yuat Rural  
**Number of wards:** 149

### Population

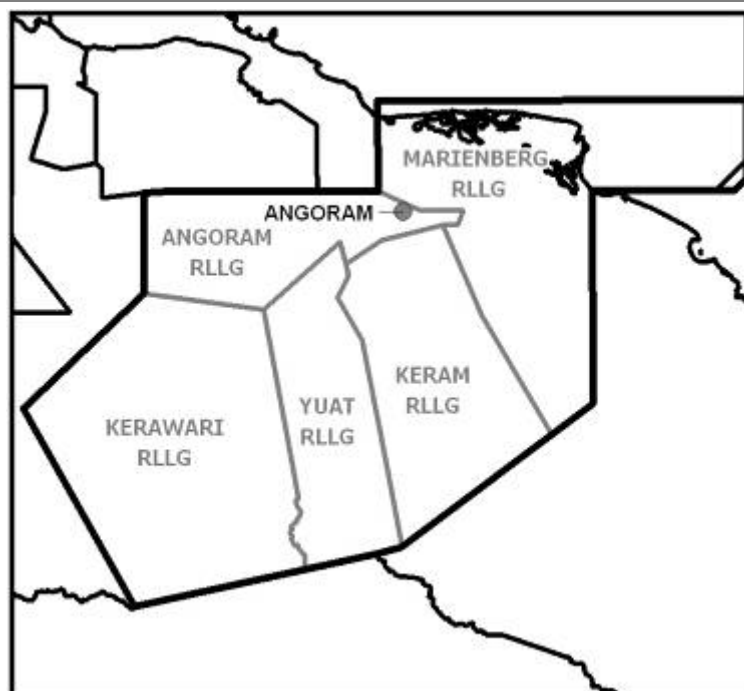
		Male (%)	Female (%)
Total	68796	50.6	49.4
< 15 years	31589	52.0	48.0
15-64 years	35546	49.4	50.6
> 65 years	1661	50.5	49.5
Citizen households	11139		

### Area and population density

Area (km <sup>2</sup> )	17546
Occupied area (km <sup>2</sup> )	1996
Population per km <sup>2</sup>	3.9
Population per km <sup>2</sup> of occupied area	34.5

### Electoral statistics

Eligible voters (2000 Census)	32582
Number of votes cast (2002)	30583
Number of votes cast (2007)	30171



## About Angoram

Angoram District in the east of East Sepik Province includes the Murik Lakes, the Lower Sepik Valley, and the northern side of the Central Range.

The district member is Mr. Arthur Somare of the National Alliance party. He is serving a third consecutive term. He is the current Minister for Public Enterprises.

Incomes range from high in Gavien to moderate along the Sepik and Keram Rivers but fall to low toward the Central Range. There is some potential for agriculture in the Marienberg Hills.

## Education

### Type and number of schools

Elementary	40
Community	21
Primary	40
Provincial high school	1
Vocational	1

### Universal basic education indicators

Net admission rate	3.5%
Gross enrolment rate	63.7%
Net enrolment rate	43.3%

### Literacy rate

Total	Male (%)	Female (%)
45.0	51.7	38.4

## Health

### Number and population per officer

Medical officers	2	34398
Nursing officers	21	3276

### Number and population per facility

Health centres	8	8600
Aid posts	20	3440

## Infrastructure

### Road access

The Sepik Valley and coast have reasonable access to service centres via river transport. However, those living in the Central Range are very remote. A road also runs from Angoram to Wewak.

## Economic Activity

### Top agricultural activities of citizen households

	% engaged	%* engaged for cash
Coconut	70.9	11.8
Food crops	69.2	11.0
Betel nut	68.8	20.5
Fishing	52.5	8.7
Cocoa	39.4	36.7

\*of total citizen households

# Maprik District

## General Information

### Administration

**District headquarters:** Maprik  
**Number of LLGs:** 4 – Albiges Mablep Rural, Bumbuita Muhiang Rural, Maprik Wora Rural, Yamil Tamaui Rural  
**Number of wards:** 65

### Population

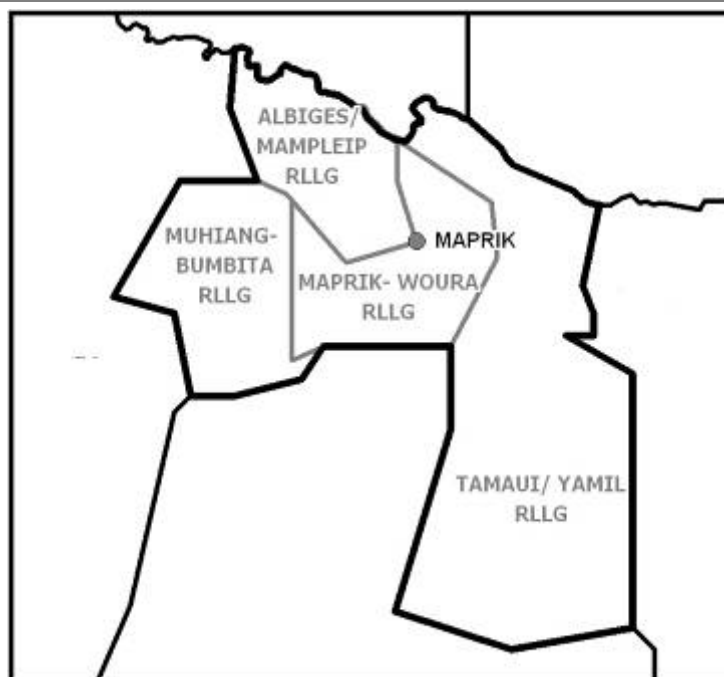
		Male (%)	Female (%)
Total	57806	49.6	50.4
< 15 years	24442	51.5	48.5
15-64 years	31463	48.0	52.0
> 65 years	1901	52.1	47.9
Citizen households	12095		

### Area and population density

Area (km <sup>2</sup> )	1097
Occupied area (km <sup>2</sup> )	722
Population per km <sup>2</sup>	52.7
Population per km <sup>2</sup> of occupied area	80.1

### Electoral statistics

Eligible voters (2000 Census)	29795
Number of votes cast (2002)	27873
Number of votes cast (2007)	34079



## About Maprik

Maprik District is a small district to the south side of the Torricelli Range and covers the Ambuk and Upper Amogu Rivers and the Parchee River.

The district member is Mr. Gabriel Kapris, a member of the People's Action Party and the Minister for Commerce and Industry. This is his second term.

Moderate incomes are available to people in the foothills of the Torricelli Range from the sale of coffee, cocoa and food, while incomes are lower in the Parchee River area. A small amount of income is also available from alluvial gold mining in the north of the district.

## Education

### Type and number of schools

Elementary	40
Community	3
Primary	24
Provincial high school	2
Vocational	1

### Universal basic education indicators

Net admission rate	4.3%
Gross enrolment rate	80.8%
Net enrolment rate	60.0%

### Literacy rate

Total	Male (%)	Female (%)
48.8	55.6	42.3

## Health

### Number and population per officer

Medical officers	1	57806
Nursing officers	25	2312

### Number and population per facility

Health centres	5	11561
Aid posts	17	3400

## Infrastructure

### Road access

The major service centre of Maprik is within four hours travel for most of the people of the district. There are well developed rural roads linking villages as well as a road to Pagwi in neighbouring Wosera Gaui District.

## Economic Activity

### Top agricultural activities of citizen households

	% engaged	%* engaged for cash
Coffee	88.2	87.5
Coconut	87.8	3.4
Cocoa	86.7	86.3
Food crops	83.6	10.0
Betel nut	68.7	14.1

\*of total citizen households

# Wewak District

## General Information

### Administration

<b>District headquarters:</b> Wewak
<b>Number of LLGs:</b> 5 – Boikin Dagua Rural, Turubu Rural, Wewak Islands Rural, Wewak Rural, Wewak Urban
<b>Number of wards:</b> 108

### Population

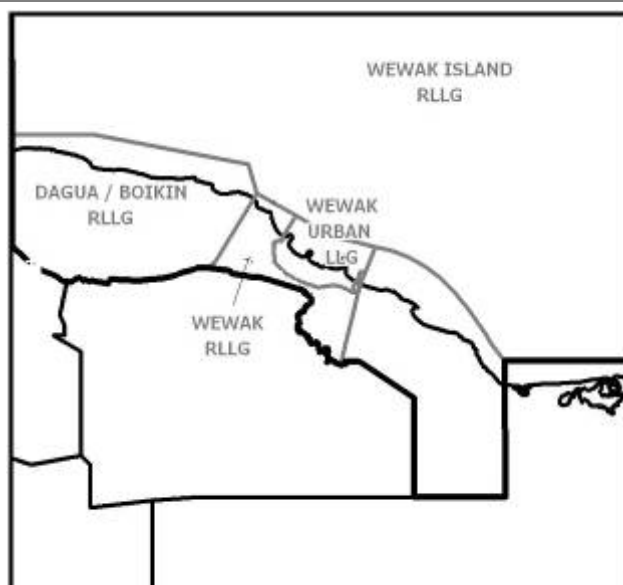
		Male (%)	Female (%)
Total	63965	51.5	48.5
< 15 years	26789	52.4	47.6
15-64 years	35733	50.8	49.2
> 65 years	1443	52.7	47.3
Citizen households	11007		

### Area and population density

Area (km <sup>2</sup> )	2284
Occupied area (km <sup>2</sup> )	1775
Population per km <sup>2</sup>	28.0
Population per km <sup>2</sup> of occupied area	36.0

### Electoral statistics

Eligible voters (2000 Census)	32556
Number of votes cast (2002)	24864
Number of votes cast (2007)	29600



## About Wewak

Wewak District runs along the strip of land on the northern coast of East Sepik Province, on the north side of the Alexander Range. It also includes the islands close to the coast of which Mushu and Kairiru are the largest, as well as the Shouten Islands further offshore.

The district member is Mr. Jim Simatab who ran for election as an independent. However, then joined the National Alliance Party. The member between 2002 and 2007 was Mr. Kimson Marcus Kare.

Wage employment and a large market are available in the Wewak town centre. Moderate incomes are available from the sale of copra, fish and fresh food on Shouten Islands but much of the rest of the district has low incomes.

## Education

### Type and number of schools

Elementary	43
Community	6
Primary	39
Provincial high school	3
Vocational	4

### Universal basic education indicators

Net admission rate	0.5%
Gross enrolment rate	76.0%
Net enrolment rate	48.2%

### Literacy rate

Total	Male (%)	Female (%)
78.7	82.7	74.6

## Health

### Number and population per officer

Medical officers	14	4569
Nursing officers	96	666

### Number and population per facility

Health centres	7	9138
Aid posts	19	3367

## Infrastructure

### Road access

A road runs through Wewak from Angoram to Aitape. However, it is often subject to flooding. The coastal plains and the Shouten Islands require up to eight hours travel to get to Wewak. Water transport is important for all coastal areas.

## Economic Activity

### Top agricultural activities of citizen households

	% engaged	%* engaged for cash
Betel nut	69.1	29.3
Coconut	66.8	36.3
Food crops	62.5	11.4
Cocoa	50.4	49.5
Fishing	29.6	4.0

\*of total citizen households

# Wosera Gaui District

## General Information

### Administration

<b>District headquarters:</b> Wosera
<b>Number of LLGs:</b> 4 – Burui Kunai Rural, Gaui Rural, North Wosera Rural, South Wosera Rural
<b>Number of wards:</b> 106

### Population

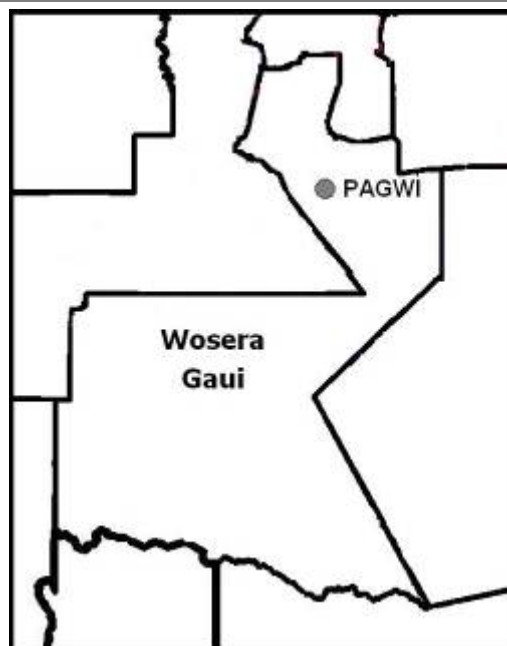
		Male (%)	Female (%)
Total	49408	48.7	51.3
< 15 years	22336	51.3	48.7
15-64 years	25697	46.6	53.4
> 65 years	1375	47.5	52.5
Citizen households	10089		

### Area and population density

Area (km <sup>2</sup> )	9055
Occupied area (km <sup>2</sup> )	1337
Population per km <sup>2</sup>	5.5
Population per km <sup>2</sup> of occupied area	37.0

### Electoral statistics

Eligible voters (2000 Census)	23994
Number of votes cast (2002)	25268
Number of votes cast (2007)	26886



## About Wosera Gaui

Wosera Gaui District stretches from Maprik down to the southern border of East Sepik Province, from the Torricelli Range and Amogu Valley in the north, through the Sepik Valley to the northern side of the Central Range.

The district member is Mr. Ronald Asik of the People's Action Party. The member between 2002 and 2007 was Mr. Gallus Yumbui.

Incomes are moderate in the Amogu Valley from the sale of food, coffee and copra, low in the Sepik Valley and very low closer to the Central Range. The land in the Amogu Valley has high potential for cultivation and could be used for further agricultural development.

## Education

### Type and number of schools

Elementary	28
Community	5
Primary	26
Provincial high school	1
Vocational	1

### Universal basic education indicators

Net admission rate	0.1%
Gross enrolment rate	70.4%
Net enrolment rate	48.1%

### Literacy rate

Total	Male (%)	Female (%)
45.9	53.9	38.8

## Health

### Number and population per officer

Medical officers	0	n/a
Nursing officers	13	3801

### Number and population per facility

Health centres	6	8235
Aid posts	10	4941

## Infrastructure

### Road access

Rural roads cover the areas closer to the coast and a road also runs to Pagwi on the Sepik River. Canoe and boat travel to along the Sepik River is important. The people in the southern-most areas, near the Central Range are very remote.

## Economic Activity

### Top agricultural activities of citizen households

	% engaged	%* engaged for cash
Coconut	83.1	2.7
Betel nut	81.3	14.9
Food crops	78.5	8.9
Coffee	72.4	71.3
Cocoa	61.4	60.8

\*of total citizen households

# Yangoru Saussia District

## General Information

### Administration

<b>District headquarters:</b> Yangoru
<b>Number of LLGs:</b> 4 - East Yangoru Rural, Numbor Rural, Sausso Rural, West Yangoru
<b>Number of wards:</b> 96

### Population

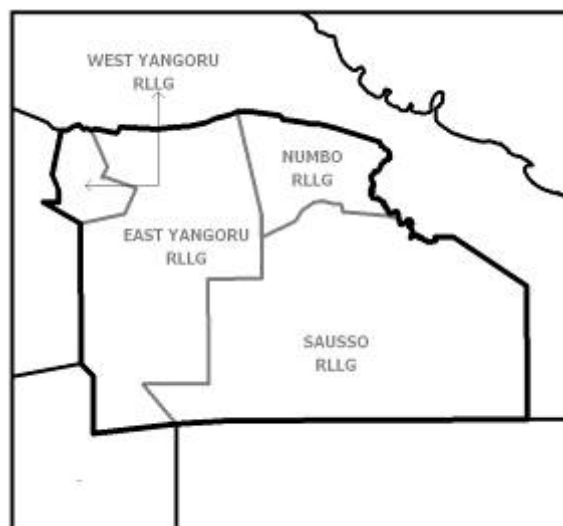
		Male (%)	Female (%)
Total	47809	49.0	51.0
< 15 years	20595	51.5	48.5
15-64 years	25309	46.8	53.2
> 65 years	1905	51.7	48.3
Citizen households	9366		

### Area and population density

Area (km <sup>2</sup> )	2660
Occupied area (km <sup>2</sup> )	1420
Population per km <sup>2</sup>	18.0
Population per km <sup>2</sup> of occupied area	33.7

### Electoral statistics

Eligible voters (2000 Census)	23979
Number of votes cast (2002)	24369
Number of votes cast (2007)	26417



## About Yangoru Saussia

Yangoru Saussia District, south of Wewak, occupies the southern side of the Prince Alexander Range and the plains of a number of rivers, all flowing into the Sepik River.

The district member is Mr. Peter Wararu of the National Alliance Party. The member between 2002 and 2007 was Mr. Hagonia. The National Court had initially nullified Mr. Wararu's election. However, his victory was later confirmed.

There is potential for further agricultural development in the area around Yangoru, given its good land and proximity to markets. Moderate incomes can be earned at the base of the Prince Alexander Range. However, incomes in the rest of the district are low to very low, from sales of coffee, copra, cocoa and food.

## Education

### Type and number of schools

Elementary	40
Community	6
Primary	29
Provincial high school	2
Vocational	0

### Universal basic education indicators

Net admission rate	5.1%
Gross enrolment rate	90.2%
Net enrolment rate	63.4%

### Literacy rate

Total	Male (%)	Female (%)
54.2	62.4	46.6

## Health

### Number and population per officer

Medical officers	0	n/a
Nursing officers	9	5312

### Number and population per facility

Health centres	3	15936
Aid posts	9	5312

## Infrastructure

### Road access

The Sepik Highway runs through the north of the district and rural roads cover populated areas. Those people living near the Nangan and Pasik Rivers require up to eight hours travel to the major service centre of Wewak.

## Economic Activity

### Top agricultural activities of citizen households

	% engaged	%* engaged for cash
Coconut	87.2	7.4
Food crops	81.9	12.2
Betel nut	81.2	22.7
Cocoa	79.9	79.2
Coffee	74.1	72.6

\*of total citizen households