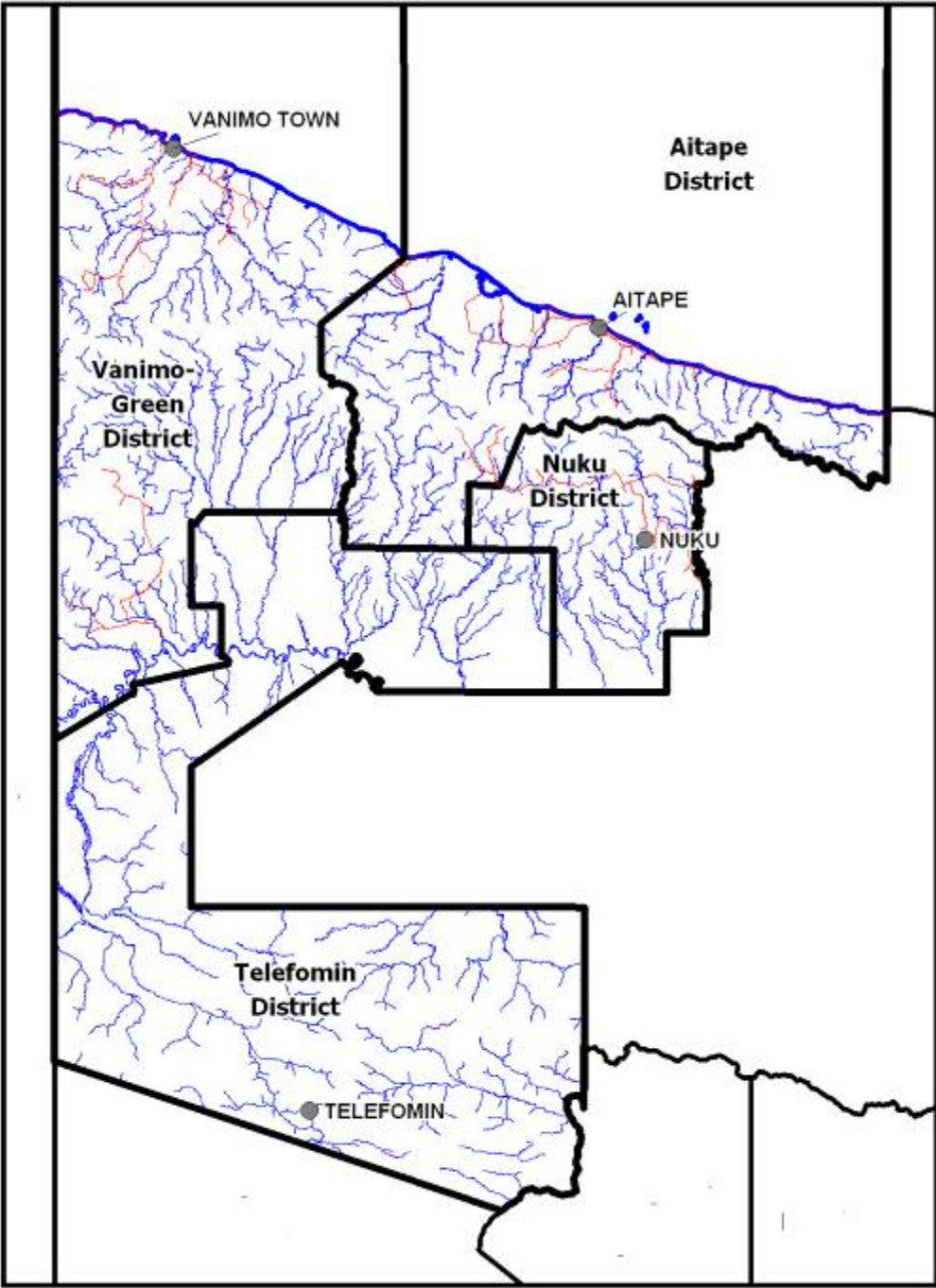


Sandaun Province



Sandaun Province

General Information

Administration

Provincial headquarters: Vanimo
Number of districts: 4 – Aitape Lumi, Nuku, Telefomin, Vanimo Green
Number of LLGs: 16
Number of wards: 315

Population

		Male (%)	Female (%)
Total	185741	51.4	48.6
< 15 years	81123	52.3	47.7
15-64 years	101205	50.7	49.3
> 65 years	3413	51.4	48.6
Citizen households	31589		

Area and population density

Area (km ²)	35820
Occupied area (km ²)	8400
Population per km ²	5.2
Population per km ² of occupied area	22.1

Average annual population growth rate (1980-2000): 2.4

About Sandaun

Sandaun Province covers the north western corner of PNG, along the border with West Papua in Indonesia. Plains and swamps run along the coast. However inland the province includes the Torricelli, Bewani, Border and Star Mountains which encircle the Sepik Valley and other rivers.

The provincial member is Mr. Simon Solo of the National Alliance Party. The member between 2002 and 2007 was Mr. Carlos Kalang Yuni.

Sandaun Province is comparatively very poor. Income-earning opportunities are low across the province, as is the potential for agricultural development, with the exception of some small areas around Lumi. Some wages and royalties can be earned from forest industries, through the importation of goods from Indonesia, and selling food to the Ok Tedi Mine in neighbouring Western Province.

The Sepik Highway and other roads link Lumi, Nuku and Aitape, but do not connect to the provincial capital Vanimo. From Vanimo, other roads link to the border and inland to Bawani. The south of the province, especially Telefomin District, is very remote.

Electoral statistics

Eligible voters (2000 Census)	92253
Number of votes cast (2002)	85081
2002 Electoral Roll	145838
Number of votes cast (2007)	91316
2007 Electoral Roll	122439

Education

Type and number of schools

Elementary	268
Community	93
Primary	107
Provincial high	8
Secondary	4
Vocational	9

Universal basic education indicators (%)

Net admission rate	5.8%
Gross enrolment rate	57.9%
Net enrolment rate	39.8%

Literacy rate (%)

Total	Male	Female
44.4	52.0	36.4

Health

Number and population per facility

Health centres	31	5991
Aid posts	117	1587

Number and population per officer

Medical officers	4	46429
Nursing officers	83	2238

Mortality rates (per 1000)

Under 5 mortality rate	163
Infant mortality rate (under 1 year)	105
Child mortality rate (1-4 years of age)	58

Life expectancy (years)

Total	Male	Female
46	45.6	46.5

Economic Activity

Top agricultural activities of citizen households

	% engaged	%* engaged for cash
Food crops	75.4	9.1
Coconut	72.3	7.6
Betel nut	71.1	8.1
Cocoa	45.7	44.2
Coffee	27.9	26.1

*of total citizen households

Infrastructure

Electricity customers	1070
Percent of population within 5km of a national road	33.5

Aitape Lumi District

General Information

Administration

District headquarters: Aitape
Number of LLGs: 4 - East Aitape Rural, East Wapai Rural, West Aitape Rural, West Wapai Rural
Number of wards: 80

Population

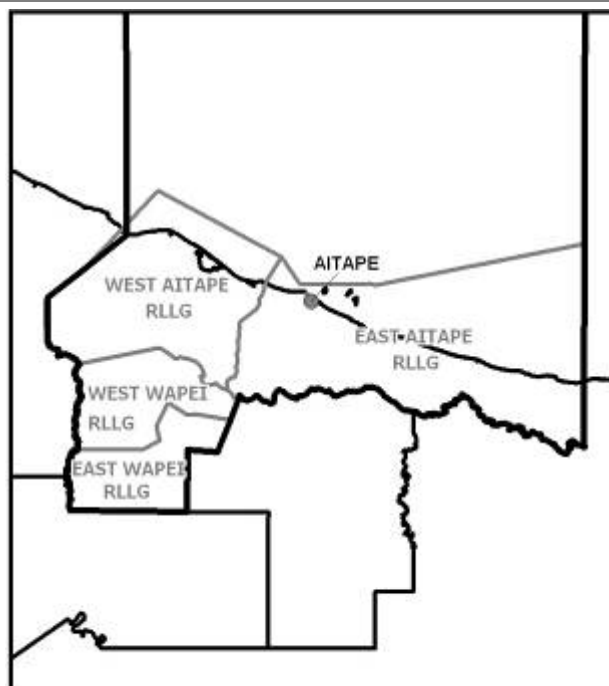
		Male (%)	Female (%)
Total	53382	51.1	48.9
< 15 years	23423	52.4	47.6
15-64 years	28996	50.1	49.9
> 65 years	963	52.1	47.9
Citizen households	8447		

Area and population density

Area (km ²)	5689
Occupied area (km ²)	1276
Population per km ²	9.4
Population per km ² of occupied area	41.8

Electoral statistics

Eligible voters (2000 Census)	26320
Number of votes cast (2002)	23936
Number of votes cast (2007)	19011



About Aitape Lumi

Aitape Lumi District extends along the coast from the East Sepik border to Sissano and the Arnold, Yalingi, Rainu, Nigla, Harech and Danop Rivers and inland over the Torricelli Range and down to the Sepik Valley.

The district member is Mr. Patrick Pruitich of the National Alliance. This is his second term. He is the current Minister for Treasury and Finance.

Some wages and royalties are earned from forestry and oil palm projects inland from Aitape. However, incomes across the district are very low.

Education

Type and number of schools

Elementary	63
Community	31
Primary	34
Provincial high school	2
Vocational	4

Universal basic education indicators

Net admission rate	4.7%
Gross enrolment rate	63.2%
Net enrolment rate	48.0%

Literacy rate

Total	Male (%)	Female (%)
52.5	60.6	44.0

Health

Number and population per officer

Medical officers	0	n/a
Nursing officers	11	4853

Number and population per facility

Health centres	6	8897
Aid posts	25	2135

Infrastructure

Road access

There is a road between Lumi and Wewak and between Aitape and Wewak, but both are in poor condition. There is no road connection to the provincial capital of Vanimo. People living in the very south are very isolated from a service centre.

Economic Activity

Top agricultural activities of citizen households

	% engaged	%* engaged for cash
Coconut	82.7	25.8
Betel nut	81.7	20.9
Food crops	75.7	16.9
Cocoa	66.0	63.5
Fishing	33.3	6.6

*of total citizen households

Nuku District

General Information

Administration

District headquarters: Nuku
Number of LLGs: 3 - Palai Rural, Yangkok Rural, Nuku Rural
Number of wards: 58

Population

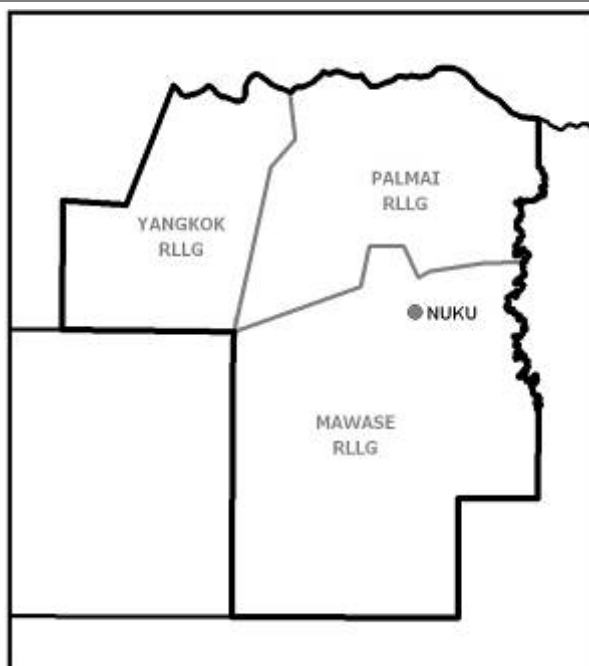
		Male (%)	Female (%)
Total	46021	50.6	49.4
< 15 years	20046	52.1	47.9
15-64 years	25108	49.6	50.4
> 65 years	867	48.1	51.9
Citizen households	9327		

Area and population density

Area (km ²)	3503
Occupied area (km ²)	2264
Population per km ²	13.1
Population per km ² of occupied area	20.3

Electoral statistics

Eligible voters (2000 Census)	23050
Number of votes cast (2002)	21898
Number of votes cast (2007)	24428



About Nuku

Nuku District includes the northern side of the Sepik Valley and the Nopan, Wagasu and Nambilo Rivers and the foothills of the Torricelli Range.

The district member is Mr. Andrew Kumbakor, a member of the Pangu Party and the current Minister for Housing and Urban Development. This is his third term.

Across the district there are few opportunities to earn income and incomes are very low. The potential for development of agriculture in the foothills of the Torricelli Range is very high. However, substantial transport infrastructure is needed for this area to develop.

Education

Type and number of schools

Elementary	64
Community	14
Primary	31
Provincial high school	1
Vocational	3

Universal basic education indicators

Net admission rate	0.9%
Gross enrolment rate	42.8%
Net enrolment rate	25.6%

Literacy rate

Total	Male (%)	Female (%)
42.0	50.6	33.4

Health

Number and population per officer

Medical officers	0	n/a
Nursing officers	10	4602

Number and population per facility

Health centres	9	5113
Aid posts	21	2191

Infrastructure

Road access

A road leads from Nuku to the Sepik Highway and on to Wewak. However, there is no road connection to the capital of the province, Vanimo. People living in the far south are very remote and require more than a day to reach a service centre.

Economic Activity

Top agricultural activities of citizen households

	% engaged	%* engaged for cash
Coconut	92.0	0.6
Betel nut	84.8	4.0
Cocoa	81.3	79.6
Food crops	80.7	4.4
Coffee	67.9	64.8

*of total citizen households

Telefomin District

General Information

Administration

District headquarters: Telefomin
Number of LLGs: 4 - Namea Rural, Oksapmin Rural, Telefomin Rural, Yapsie Rural
Number of wards: 82

Population

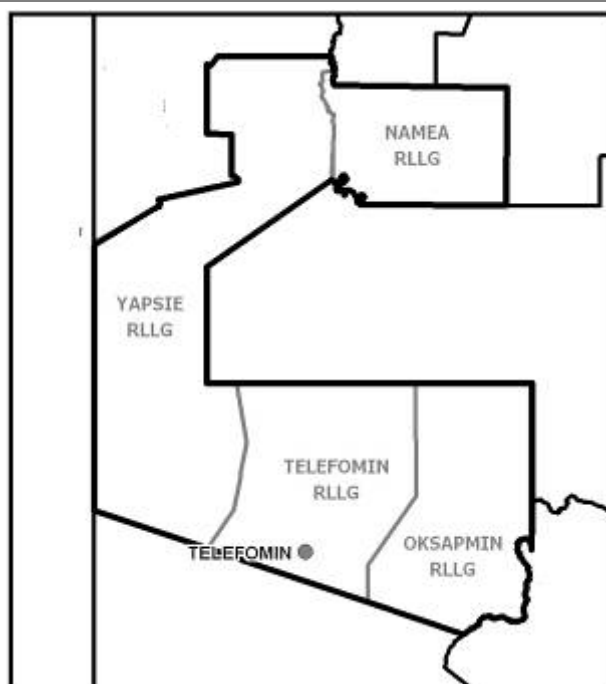
		Male (%)	Female (%)
Total	35587	50.5	49.5
< 15 years	15195	51.5	48.5
15-64 years	19510	49.5	50.5
> 65 years	882	56.1	43.9
Citizen households	5687		

Area and population density

Area (km ²)	16333
Occupied area (km ²)	2413
Population per km ²	2.2
Population per km ² of occupied area	14.7

Electoral statistics

Eligible voters (2000 Census)	18120
Number of votes cast (2002)	19910
Number of votes cast (2007)	19240



About Telefomin

Telefomin District is the most remote in the country. It includes the head of the Sepik River. However it is mostly made up of the West, Thurnwald, Fiamolu, Star and Victor Emanuel Ranges.

The district member is Mr. Peter Iwei, a member of the People's Democratic Movement Party. The member between 2002 and 2007 was Mr. Atimeng Buhupe.

Low incomes can be made near Telefomin and Oksapmin from selling food and earning income at the Ok Tedi Mine. However the rest of the province provides low income-earning opportunities.

Education

Type and number of schools

Elementary	65
Community	19
Primary	16
Provincial high school	2
Vocational	1

Universal basic education indicators

Net admission rate	10.6%
Gross enrolment rate	66.0%
Net enrolment rate	42.7%

Literacy rate

Total	Male (%)	Female (%)
30.3	36.9	23.7

Health

Number and population per officer

Medical officers	1	35587
Nursing officers	12	2966

Number and population per facility

Health centres	5	7117
Aid posts	37	962

Infrastructure

Road access

There are few roads in the district and the terrain creates major limitations for transport. People near Telefomin have reasonable access to services but much of the rest of the district is very remote. Canoe travel is used along the Sepik River.

Economic Activity

Top agricultural activities of citizen households

	% engaged	%* engaged for cash
Food crops	77.3	13.2
Livestock	40.0	3.7
Betel nut	26.6	1.8
Coconut	24.7	0.9
Poultry	19.3	0.8

*of total citizen households

Vanimo Green District

General Information

Administration

District headquarters: Vanimo
Number of LLGs: 5 - Amanab Rural, Bewani/Wutung Onei Rural, Green River Rural, Vanimo Urban, Walsa Rural
Number of wards: 95

Population

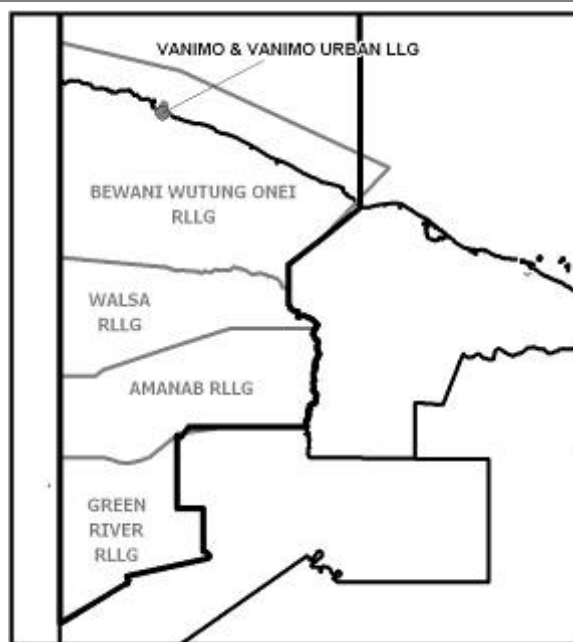
		Male (%)	Female (%)
Total	50751	53.1	46.9
< 15 years	22459	52.9	47.1
15-64 years	27591	53.2	46.8
> 65 years	701	55.2	44.8
Citizen households	8128		

Area and population density

Area (km ²)	10295
Occupied area (km ²)	2447
Population per km ²	4.9
Population per km ² of occupied area	20.7

Electoral statistics

Eligible voters (2000 Census)	24763
Number of votes cast (2002)	18790
Number of votes cast (2007)	21252



About Vanimo Green

Vanimo Green District occupies the north western corner of PNG, on the border with West Papua. In the north, it covers the Oenake Range, the Nemayer River, Bawani Mountains and Plains and Border Mountains. The Wuro, North, Horden, Senu, and Faringi Rivers in the south all flow into the Sepik River.

The district member is Mr. Belden Namah of the National Alliance Party. He is the Minister for Forestry. The member between 2002 and 2007 was Mr. Inou Philip.

Some incomes are derived from the importation and sale of goods from Indonesia and from the royalties and wages of the forestry industry. However, incomes in the district remain low to very low, especially in the area around Green River.

Education

Type and number of schools

Elementary	76
Community	29
Primary	26
Provincial high school	3
Vocational	1

Universal basic education indicators

Net admission rate	7.9%
Gross enrolment rate	60.5%
Net enrolment rate	42.1%

Literacy rate

Total	Male (%)	Female (%)
48.3	55.0	40.8

Health

Number and population per officer

Medical officers	3	16917
Nursing officers	50	1015

Number and population per facility

Health centres	11	4614
Aid posts	34	1493

Infrastructure

Road access

A road runs from Vanimo to the Indonesian border and inland to Bawani. However, those in the south east are very isolated from service centres.

Economic Activity

Top agricultural activities of citizen households

	% engaged	%* engaged for cash
Betel nut	75.5	4.1
Coconut	72.3	1.3
Food crops	67.6	3.4
Fishing	20.2	1.3
Poultry	17.3	1.1

*of total citizen households