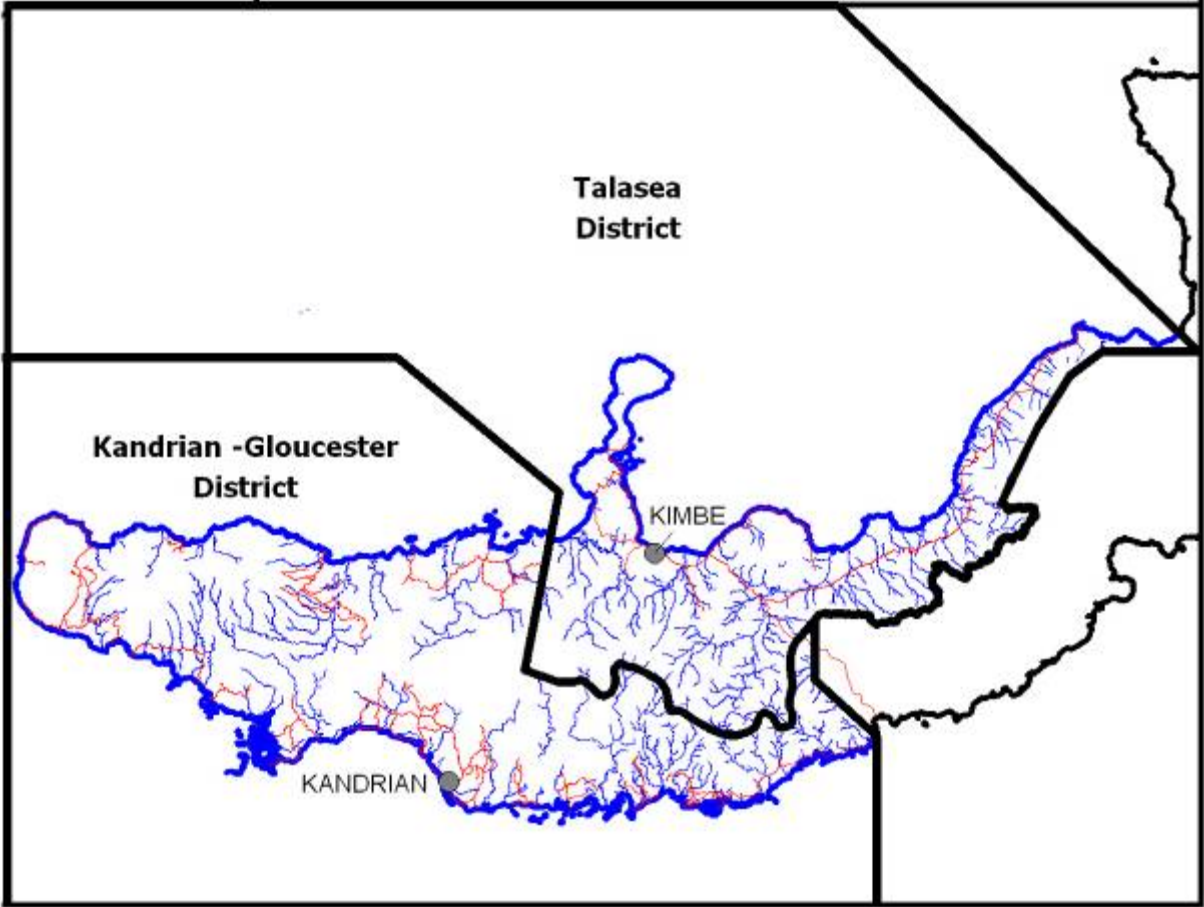


West New Britain Province



West New Britain Province

General Information

Administration

Provincial headquarters: Kimbe
Number of districts: 2 – Kandrian Gloucester, Talasea
Number of LLGs: 11
Number of wards: 111

Population

		Male (%)	Female (%)
Total	184508	53.7	46.3
< 15 years	79629	52.5	47.5
15-64 years	101417	54.5	45.5
> 65 years	3462	53.7	46.3
Citizen households	30672		

Area and population density

Area (km ²)	20387
Occupied area (km ²)	5807
Population per km ²	9.1
Population per km ² of occupied area	31.8

Average annual population growth rate (1980-2000): 3.6

About West New Britain

West New Britain Province stretches along the coastal plains and the Nakanai Mountains between Sule and Kimbe, and into the Awio Valley. The Whitman Range runs through the centre of the province with the Aria and Banu Valleys flowing to the north coast and the Palicks and Anduru Valleys flowing to the south. The province also includes the Bali and Witu Islands to the north of the mainland.

The provincial member is Mr. Peter Humphreys of the National Alliance Party. The member between 2002 and 2007 was Mr. Clement Nakamai.

High incomes can be earned in the northeast from oil palm production as well as the sale of food, cocoa, betel nut and copra. Wage incomes can also be earned around Kimbe, Hoskins and Talasea, along with some limited, forestry royalties near Kandrian and Cape Gloucester. Most of the inland areas of the province have very few income earning opportunities.

A road network covers the north east coast of the province between Sule and Talasea, however the rest of the province has very few roads except for those established by forestry operations near Kandrian and Cape Gloucester.

Electoral statistics

Eligible voters (2000 Census)	92540
Number of votes cast (2002)	67753
2002 Electoral Roll	148181
Number of votes cast (2007)	70037
2007 Electoral Roll	112049

Education

Type and number of schools

Elementary	233
Community	59
Primary	102
Provincial high	3
Secondary	2
Vocational	4

Universal basic education indicators (%)

Net admission rate	6.2%
Gross enrolment rate	87.3%
Net enrolment rate	66.6%

Literacy rate (%)

Total	Male	Female
70.7	73.9	66.9

Health

Number and population per facility

Health centres	27	6834
Aid posts	76	2428

Number and population per officer

Medical officers	12	15376
Nursing officers	153	1206

Mortality rates (per 1000)

Under 5 mortality rate	74
Infant mortality rate (under 1 year)	55
Child mortality rate (1-4 years of age)	19

Life expectancy (years)

Total	Male	Female
56.7	56.7	56.7

Economic Activity

Top agricultural activities of citizen households

	% engaged	%* engaged for cash
Food crops	69.5	14.4
Betel nut	63.0	23.4
Coconut	62.5	36.5
Livestock	35.1	7.9
Fishing	34.1	6.6

*of total citizen households

Infrastructure

Electricity customers	1982
Percent of population within 5km of a national road	59.6

Kandrian Gloucester District

General Information

Administration

District headquarters: Kandrian
Number of LLGs: 5 - Gasmata Rural, Gloucester Rural, Kandrian Coastal Rural, Kandrian Inland Rural, Kove Kaliai Rural
Number of wards: 51



Population

		Male (%)	Female (%)
Total	55716	51.9	48.1
< 15 years	25861	52.9	47.1
15-64 years	28577	50.8	49.2
> 65 years	1278	55.3	44.7
Citizen households	9610		

Area and population density

Area (km ²)	12499
Occupied area (km ²)	4207
Population per km ²	4.5
Population per km ² of occupied area	13.2

Electoral statistics

Eligible voters (2000 Census)	26329
Number of votes cast (2002)	23408
Number of votes cast (2007)	22047

About Kandrian Gloucester

Kandrian Gloucester District occupies the south western end of West New Britain Province. The northern areas include Cape Gloucester, Mt. Schrader and the Banu and Aria Valleys. Across the Whiteman Range and towards the southern coast run the Palicks and Anduru Valleys.

The district member is Mr. Tony Puana, a member of the New Generation Party. The member between 2002 and 2007 was Mr. David Sui.

The entire district earns relatively low incomes from selling copra, cocoa and food. However, forestry operations around Kandrian and Cape Gloucester provide wages and royalties for a small number of people.

Education

Type and number of schools

Elementary	77
Community	34
Primary	44
Provincial high school	2
Vocational	1

Universal basic education indicators

Net admission rate	5.4%
Gross enrolment rate	69.9%
Net enrolment rate	50.5%

Literacy rate

Total	Male (%)	Female (%)
60.9	65.5	56.1

Health

Number and population per officer

Medical officers	0	n/a
Nursing officers	22	2533

Number and population per facility

Health centres	13	4286
Aid posts	33	1688

Infrastructure

Road access

All people in Kandrian-Gloucester are more than four hours travel from major service centres. While there are some logging roads, there are very few other roads in the district. Transport by outboard motor boat and canoe are common along the coast.

Economic Activity

Top agricultural activities of citizen households

	% engaged	%* engaged for cash
Betel nut	86.0	29.7
Coconut	83.1	46.7
Food crops	82.8	20.5
Livestock	55.9	13.1
Fishing	51.6	13.5

*of total citizen households

Talasea District

General Information

Administration

District headquarters: Kimbe
Number of LLGs: 6 - Bialla Rural, Bali/Witu Rural, Hoskins Rural, Kimbe Urban, Mosa Rural, Talasea Rural
Number of wards: 60

Population

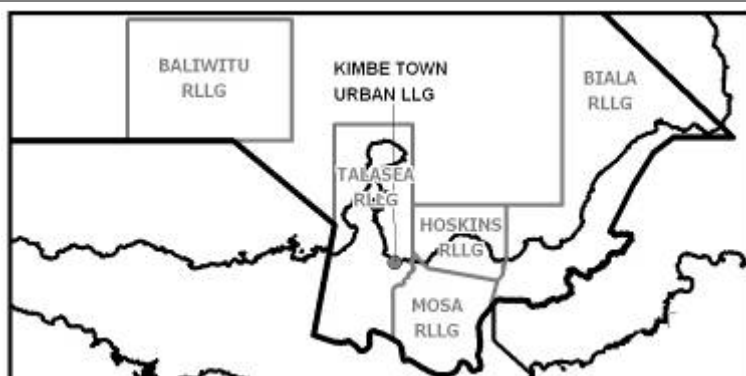
		Male (%)	Female (%)
Total	128792	54.4	45.6
< 15 years	53768	52.3	47.7
15-64 years	72840	56.0	44.0
> 65 years	2184	55.7	44.3
Citizen households	21062		

Area and population density

Area (km ²)	7888
Occupied area (km ²)	1600
Population per km ²	16.3
Population per km ² of occupied area	80.5

Electoral statistics

Eligible voters (2000 Census)	66211
Number of votes cast (2002)	44325
Number of votes cast (2007)	47792



About Talasea

Talasea District includes the Willaumez Peninsula and runs along the coastal plains until just beyond Sule. Inland, it includes the Nakanai Mountains and, further south west, the Awio Valley.

The district member is Mr. Francis Marus, a member of the Pangu Party. The member between 2002 and 2007 was Mr. John Vulupindi.

High incomes can be earned on the northern coast from the sale of oil palm, food, cocoa, betel nut, fish and copra. Wages are also available from businesses and industries near the towns of Talasea, Kimbe and Hoskins. People in the inland valleys earn very low incomes.

Education

Type and number of schools

Elementary	156
Community	25
Primary	58
Provincial high school	1
Vocational	3

Universal basic education indicators

Net admission rate	14.6%
Gross enrolment rate	82.5%
Net enrolment rate	64.8%

Literacy rate

Total	Male (%)	Female (%)
74.6	77.0	71.7

Health

Number and population per officer

Medical officers	12	10733
Nursing officers	131	983

Number and population per facility

Health centres	14	9199
Aid posts	43	2995

Infrastructure

Road access

Those people living between Talasea and Bialla are within easy access of service centres. Others in the district must travel up to eight hours. People in the Gavuvu and Ala Valleys of the Nakanai Mountains need more than a day, to reach a service centre.

Economic Activity

Top agricultural activities of citizen households

	% engaged	%* engaged for cash
Food crops	63.5	11.6
Coconut	53.1	31.8
Betel nut	52.5	20.5
Oil palm	38.9	38.4
Fishing	26.1	3.5

*of total citizen households