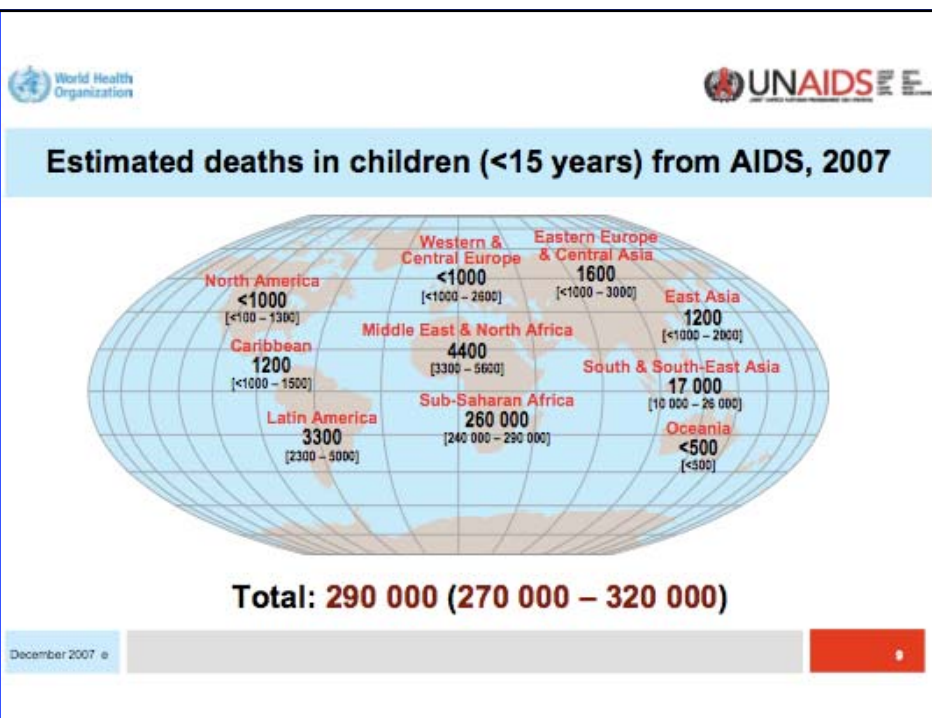


Early Infant Diagnosis (EID) Papua New Guinea

Presenter: Nella Renton
Scientific Officer, PCR Lab
CPHL, PNG

The William J Clinton Foundation, PNG.



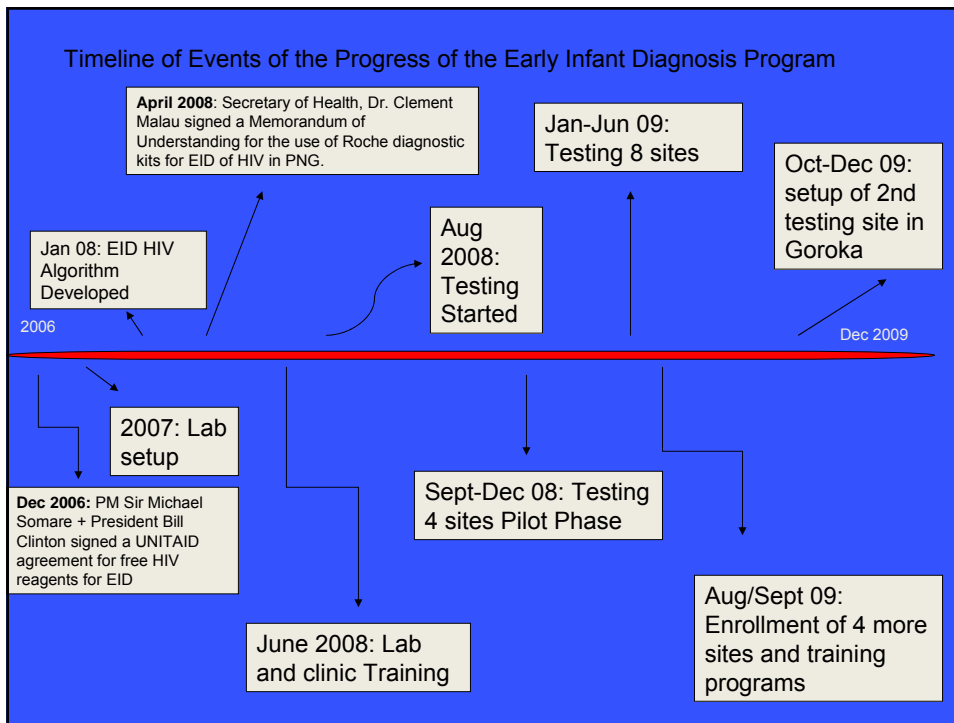
Paediatric HIV In PNG 2007

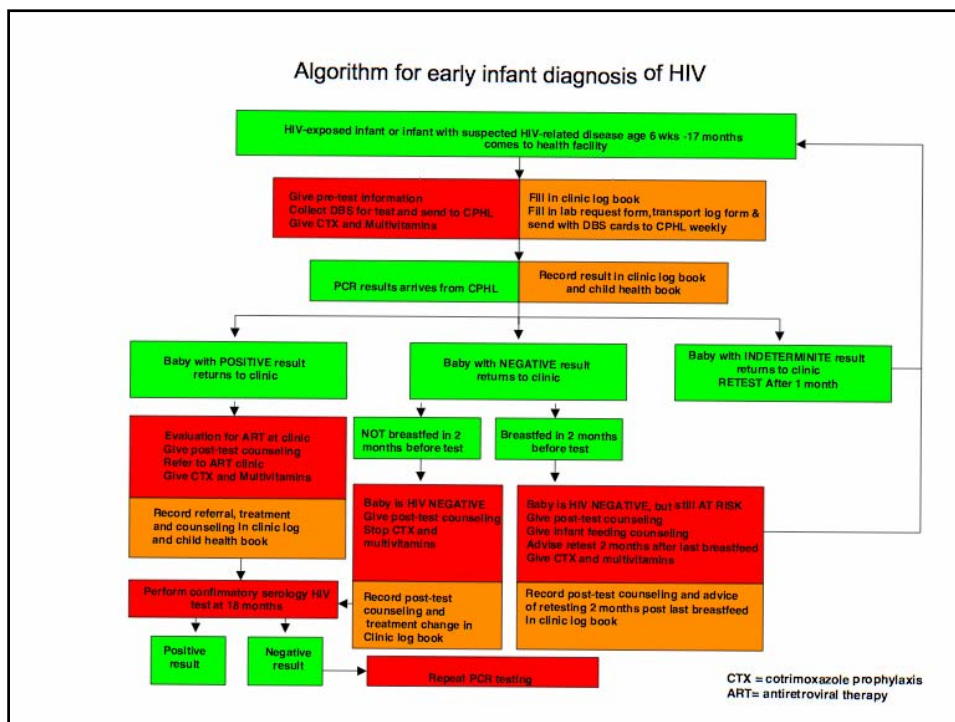
| | |
|--|----------------|
| Number of HIV+ pregnant mothers | 3,621 |
| Number of mothers on PPTCT Prophylaxis | 84 (2.32 %) |
| Estimated number of children living with HIV | 1,057 |
| New infections in 2007 | 954 |
| Number of children on ART | 185 (9.2%) |

NACS, 2008

EID Program Goals

- Establish Program - Approval from NDOH
- Roll out access testing to sites
- ↓ National Infant Mortality Rate
- Introduce Roche HIV-1 PCR assay as the gold standard test for infant HIV diagnosis
- Adoption of program to be run by National Department of Health
- Work in parallel with the National PPTCT program and other HIV programs





Challenges in Papua New Guinea and Lessons Learnt

- Maintaining a high level of Quality Assurance according to ISO/GLP standards.
 - Monthly proficiency testing
 - Blinded duplicate testing
 - Internal controls (Roche and CDC)
 - EQAS participation (US CDC)
- Training Revisions
- Maintaining confidentiality of information
- Incomplete forms filled.
- Improving program materials e.g. SOPs

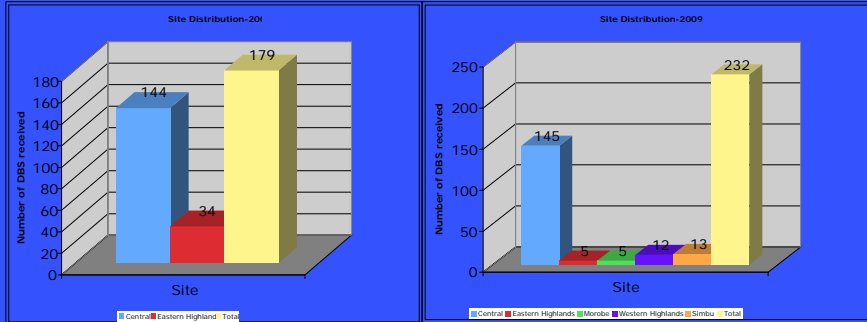
Sustainability

- 2009 AUSAID review – 6 year funding
- Capacity Building, localising CF positions
- Strengthens current HIV/AIDS MSG for 2011-2021
- Strengthening the Port Moresby program by review, retrainings and new site enrollments
- New testing site to be set up in Goroka (Sept 2009)
- Support ongoing trainings at new sites in PNG
- Introducing the viral load platform for case management of monitoring of ART.

Total Infants Tested

2008 179 infants tested

2009 232 infants tested

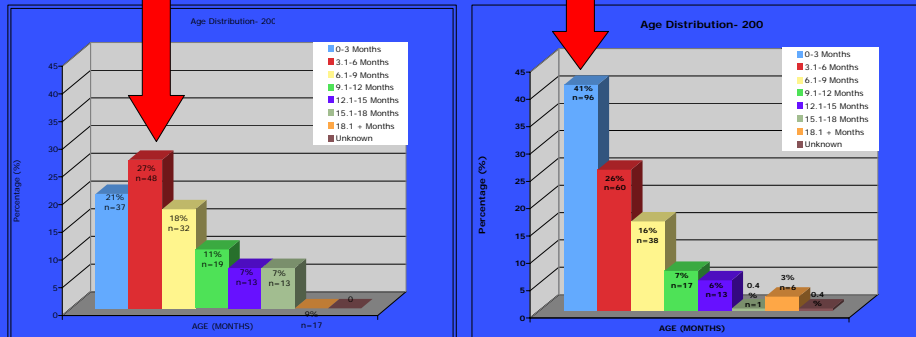


- Number of sites increased in 2009 testing from 2 provinces to 5 provinces

Age Distribution of Infants Tested

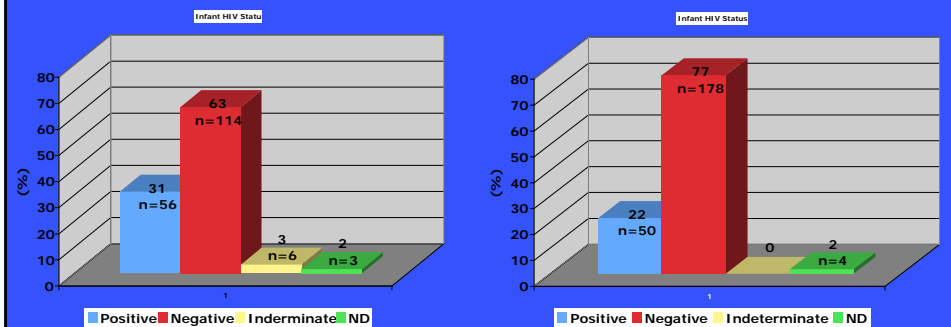
2008 mean age: 8.11 months
median age: 6.57 months

2009 mean age: 5.58 months
median age: 4 months



% of Positives

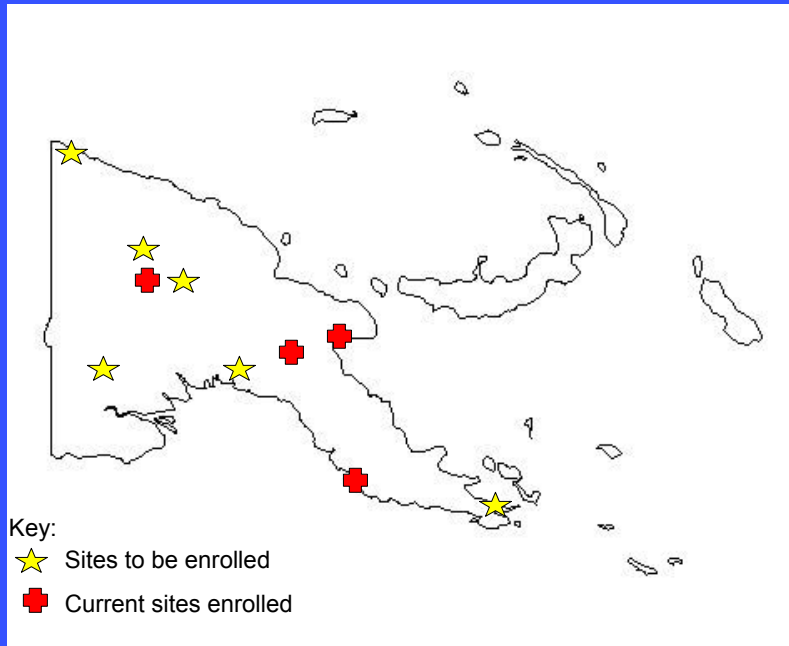
- % of positives 2009 (22%) is lower than in 2008 (31%)
- Backlog in 2008 may have created a trend of higher aged infants that had longer time to breast feed before testing, therefore increasing the risk of transmission - HYPOTHESIS!!!
- 3% INDETERMINATES (Training! Training! Training!) Roche HIV-1 DNA PCR Assay highly accurate, costly
- Rejected samples 2%



Results of EID

- Pre-EID: 29 deaths of HIV positive Infants <12 months
- Post-EID: 2 deaths of HIV positive infants <12 months
- Current EID: 40 out of 67 HIV positive infants currently on ART

EID EXPANDING



ACKNOWLEDGEMENTS

Co-authors: Dr. J Markby
Dr. M Kiromat
Dr. E. Lavu
Dr. D. Esorom
G. Narekene
O. Kaminiel

William J Clinton Foundation
National Department of Health
CPHL
Asian Development Bank
AusAID